

# TbredComm™/VIP™ Client Install



285 Davidson Ave., Suite 302 • Somerset, NJ 08873-4153  
Telephone: 732-560-1377 • Outside NJ 800-524-0430  
Fax: 732-560-1594

Internet address: <http://www.tbred.com>

Published by:  
Thoroughbred Software International, Inc.  
285 Davidson Ave., Suite 302  
Somerset, New Jersey 08873-4153

Copyright ©2010 by Thoroughbred Software International, Inc.

All rights reserved. No part of the contents of this document  
may be reproduced or transmitted in any form or by any means  
without the written permission of the publisher.

The Thoroughbred logo, Swash logo, and Solution-IV Accounting logo, OPENWORKSHOP, THOROUGHbred, VIP FOR DICTIONARY-IV, VIP, VIPImage, DICTIONARY-IV, and SOLUTION-IV are registered trademarks of Thoroughbred Software International, Inc.

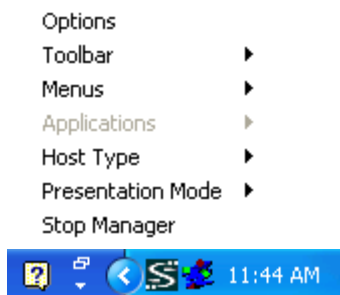
Thoroughbred Basic, TS Environment, T-WEB, Script-IV, Report-IV, Query-IV, Source-IV, TS Network DataServer, TS ODBC DataServer, TS ODBC R/W DataServer, TS ORACLE DataServer, TS DataServer, TS XML DataServer, GWW, Gateway for Windows™, TS ChartServer, TS ReportServer, TS WebServer, TbredComm, WorkStation Manager, Solution-IV Reprographics, Solution-IV ezRepro, TS/Xpress, and DataSafeGuard are trademarks of Thoroughbred Software International, Inc.

Other names, products and services mentioned are the trademarks or registered trademarks of their respective vendors or organizations.

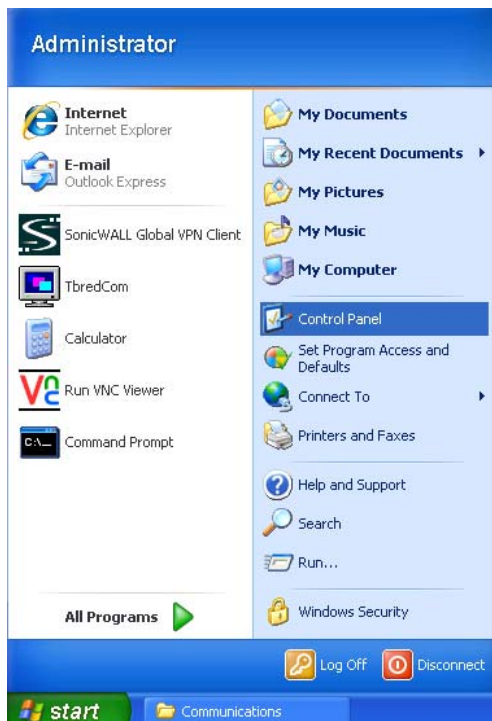
# TbredComm/VIP

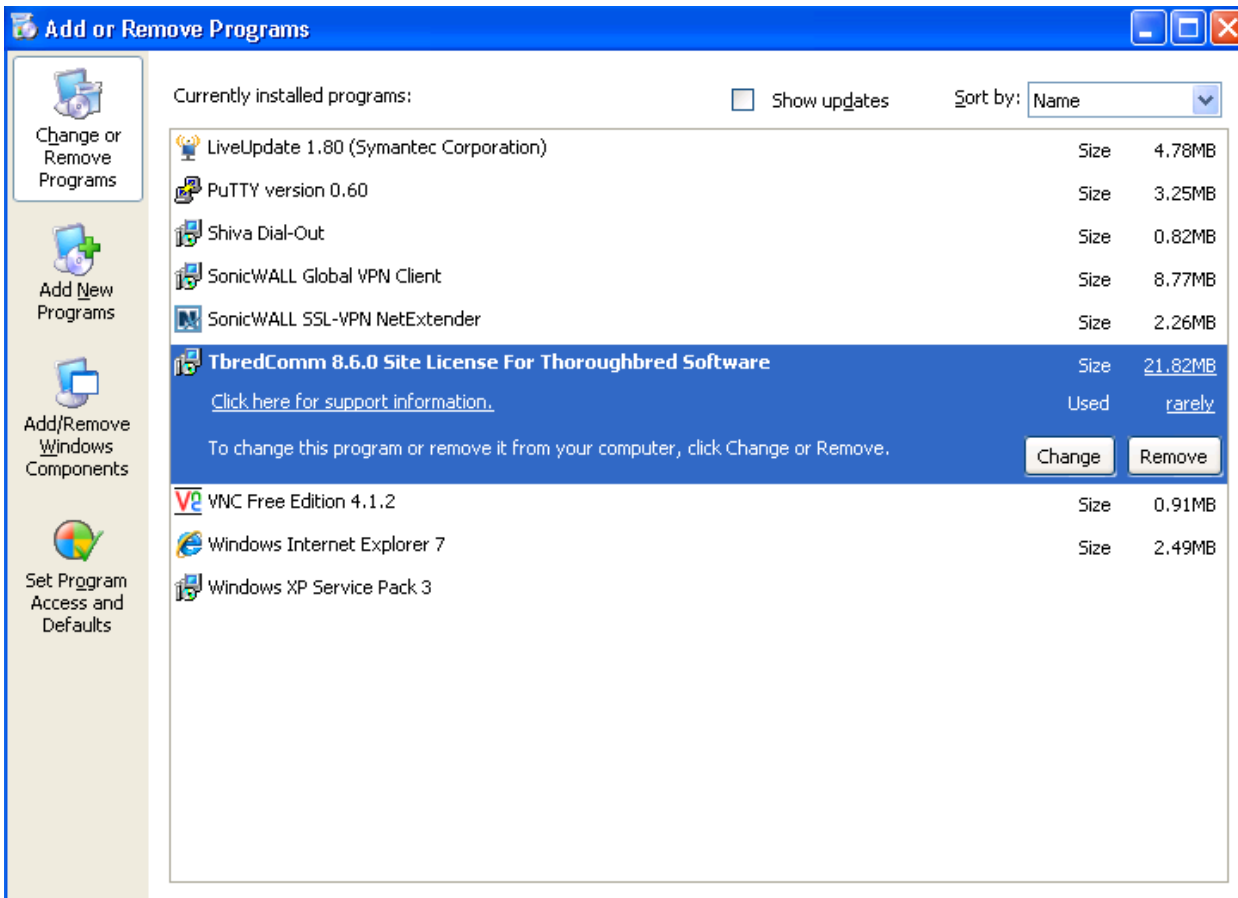
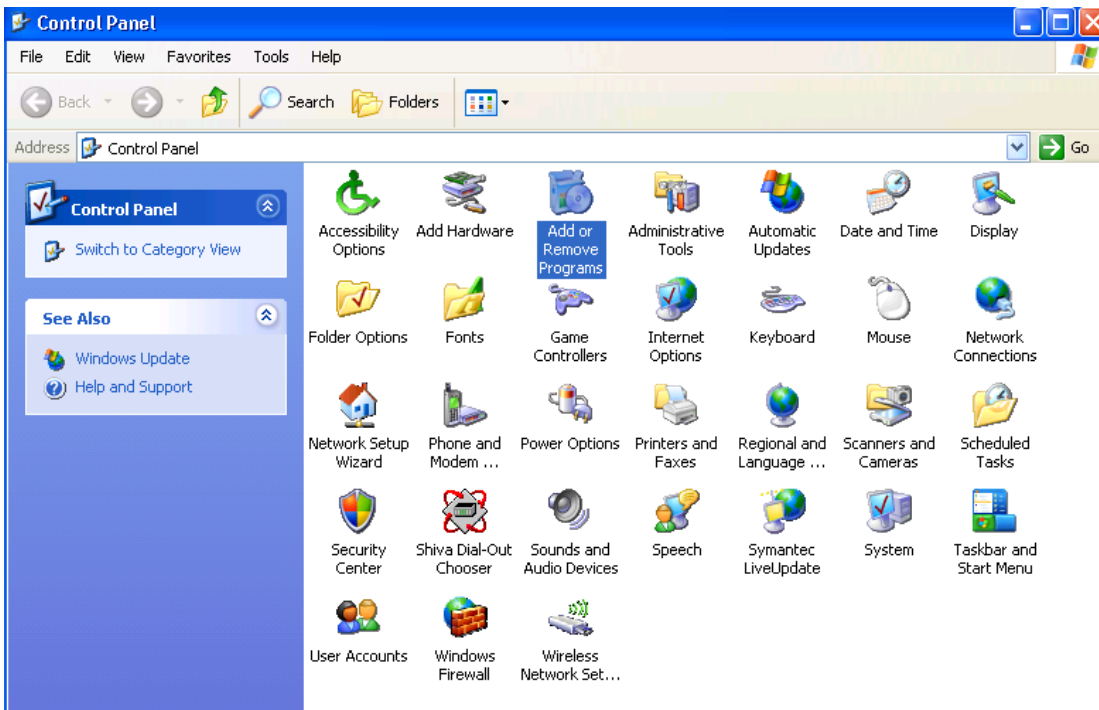
## Client Uninstall

1. Login using an Administrator Account
2. Save your workstation Manager settings by making a safe copy of C:\Windows\Tbred.ini
3. Save your custom Files by make copies of the following folders and move them to a save location:
  - a. C:\TS\Scripts, for TbredComm scripts files
  - b. C:\TS\Reports, for saved TS ReportServer files
4. If running shutdown Workstation manager, Right Click on icon in system tray



5. Remove TbredComm using Start, Control Panel, Add/Remove Programs



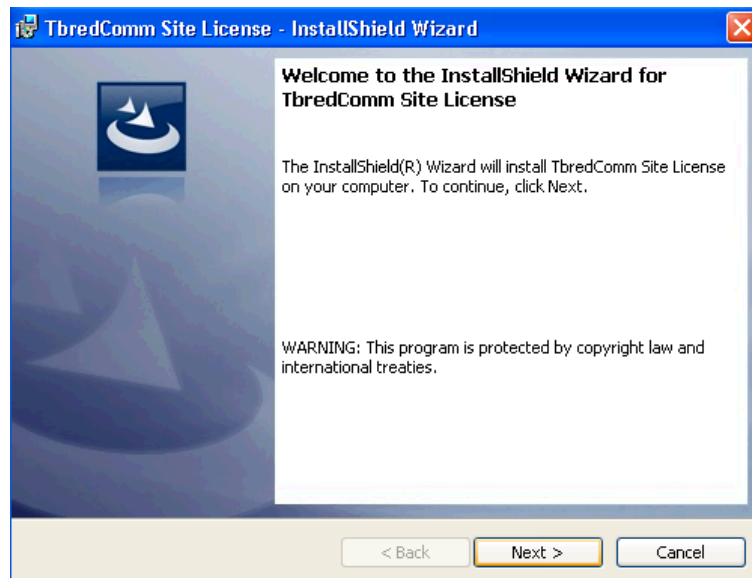


6. Remove VIP for Dictionary-IV from Start, Control Panel, Add/Remove Programs
  - a. Get image of Add/Remove Programs for VIP

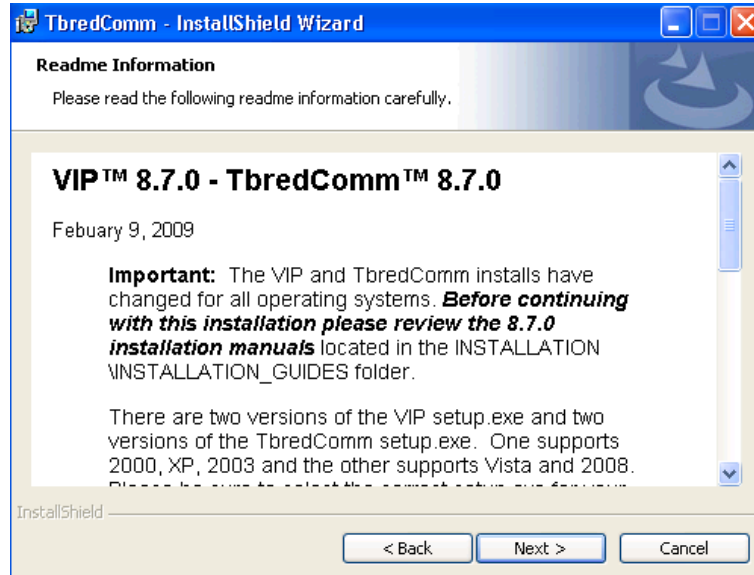
7. Files not installed by the setup or files that have changed since the setup was run are not removed. If you have already uninstalled other Thoroughbred products some of the following files will no longer exist. Erase the following folders and files:
  - a. C:\TSI folder
  - b. C:\Windows\tsiconts.ini
  - c. C:\windows\Tbred86.BAS
8. We recommend running a reliable registry cleaner at this point.
9. Reboot your system

## Client Install

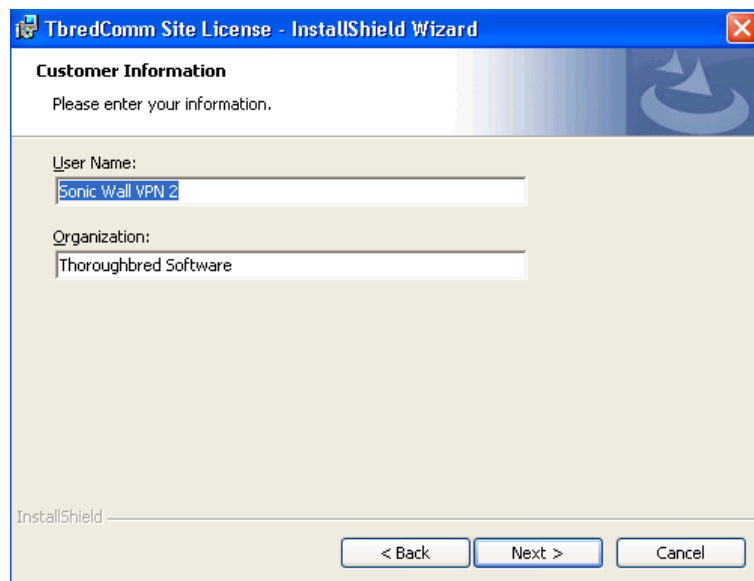
1. Login using Administrator account
2. Install TbredComm
  - a. Insert the TbredComm V8.7.0 CD, Browse the CD and select the appropriate TbredComm workstation setup for the target platform.
    - i. If you are installing on XP, 2000, or 2003 run the setup.exe in the TBCOM\_XP2K folder
    - ii. If you are installing on VISTA or 2008 run the setup.exe in the TBCOM\_VISTA folder
  - b. The Install Shield Wizard will start the installation process. You can exit the installation at anytime by selecting the Cancel button:
    - i. Welcome, Click Next



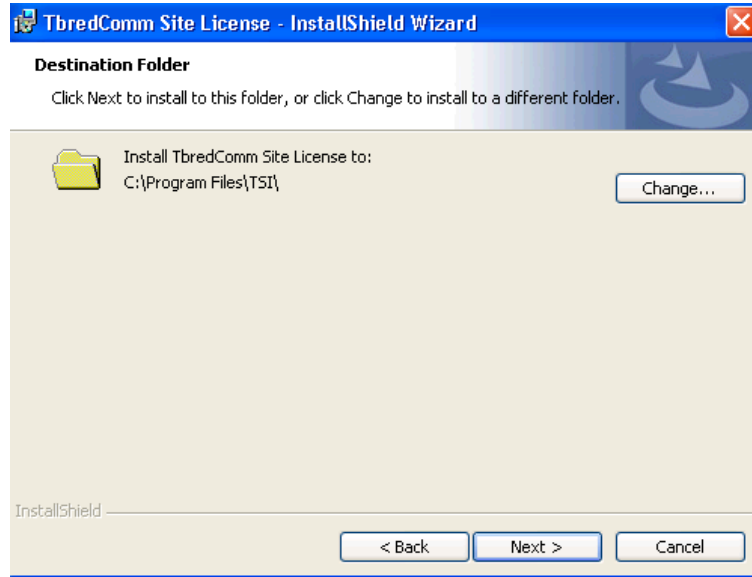
ii. Readme Information, Click Next



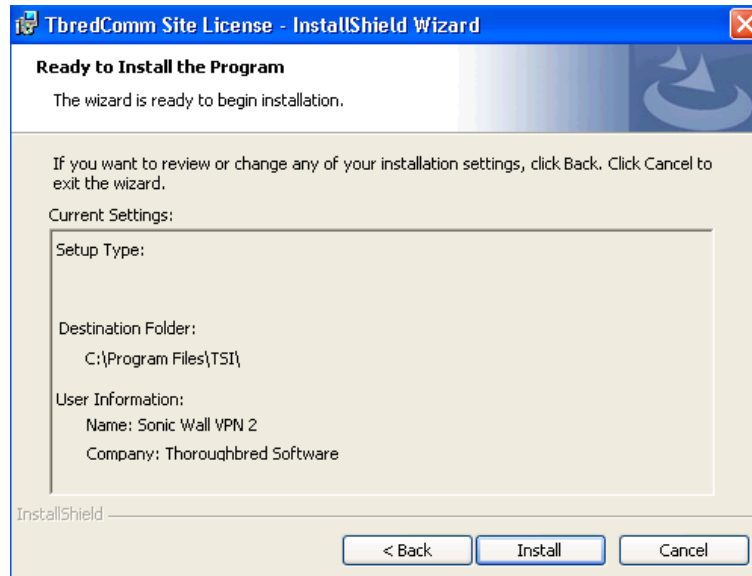
iii. Customer Information, Enter Name and Company and Click Next



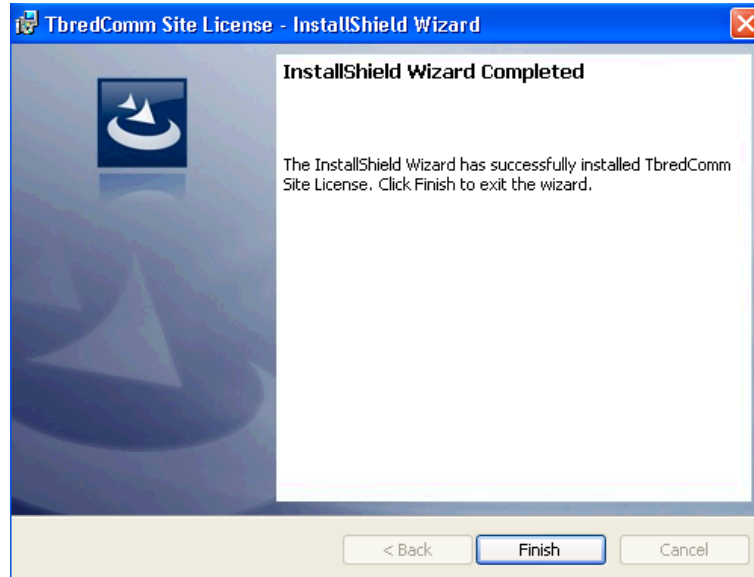
- iv. Destination Folder, We strongly recommend installing into the default folder.



- v. Installation information review, Click Install

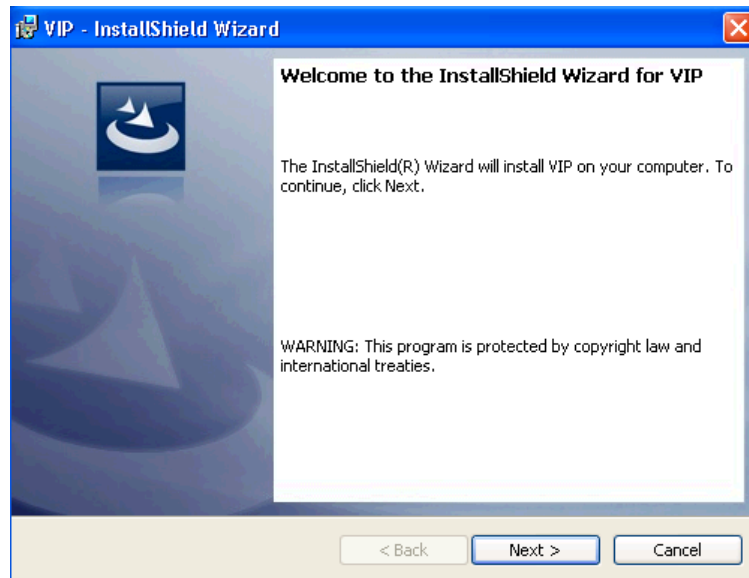


- vi. Setup complete, Click Finished

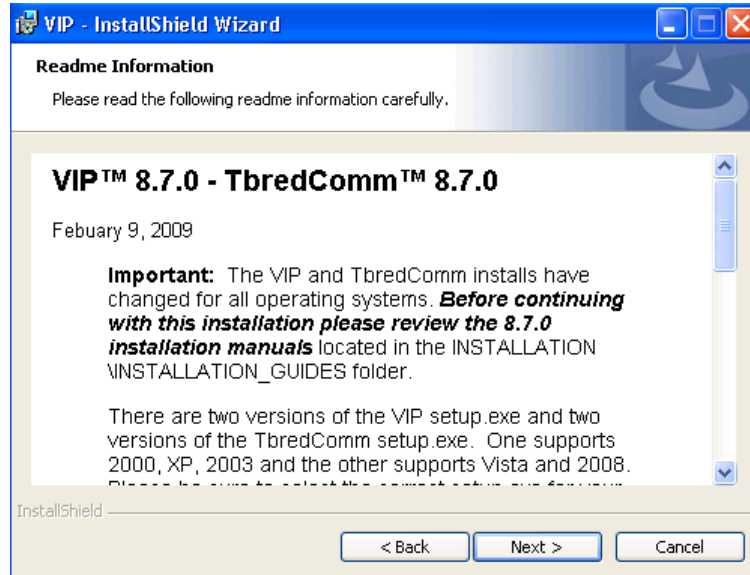


3. Install VIP Workstation

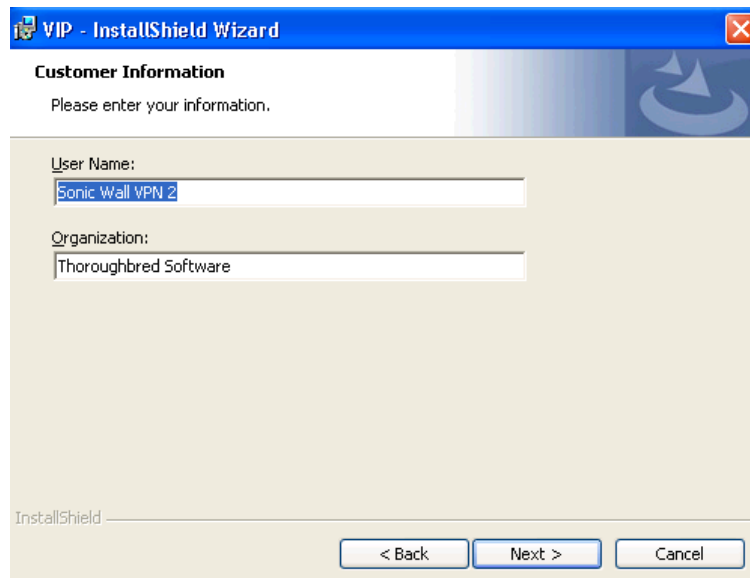
- a. Insert the VIP Workstation V8.7.0 CD, Browse the CD and select the appropriate TbredComm workstation setup for the target platform.
  - i. If you are installing on XP, 2000, or 2003 run the setup.exe in the VIP4WKS\_XP2K folder
  - ii. If you are installing on VISTA or 2008 run the setup.exe in the VIP4WKS\_VISTA folder
- b. The Install Shield Wizard will start the installation process. You can exit the installation at anytime by selecting the Cancel button:
  - i. Welcome, Click Next



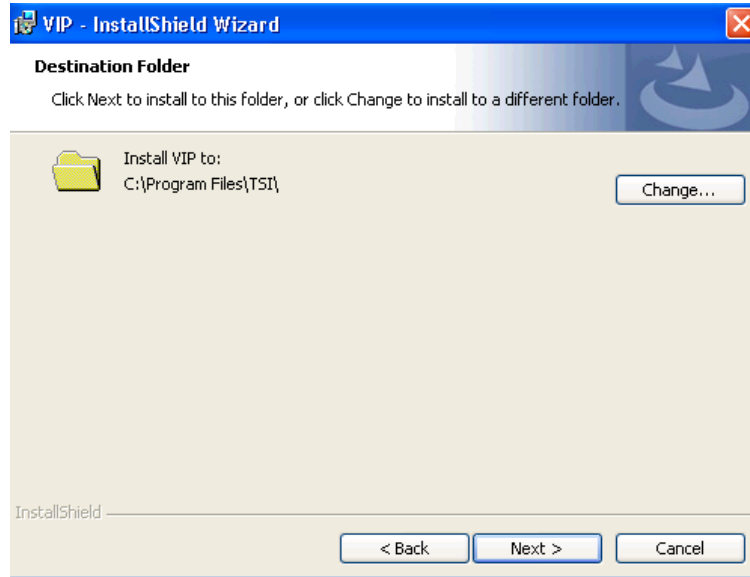
ii. Readme Information, Click Next



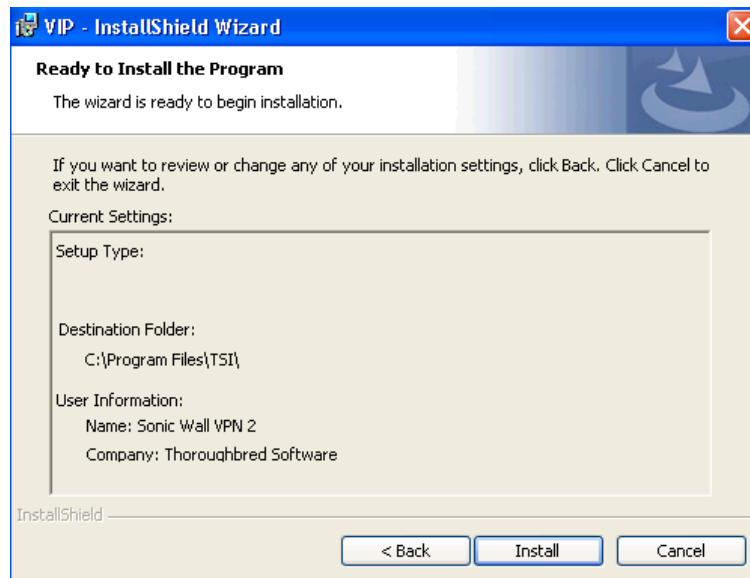
iii. Customer Information, Enter Name and Company, Click next



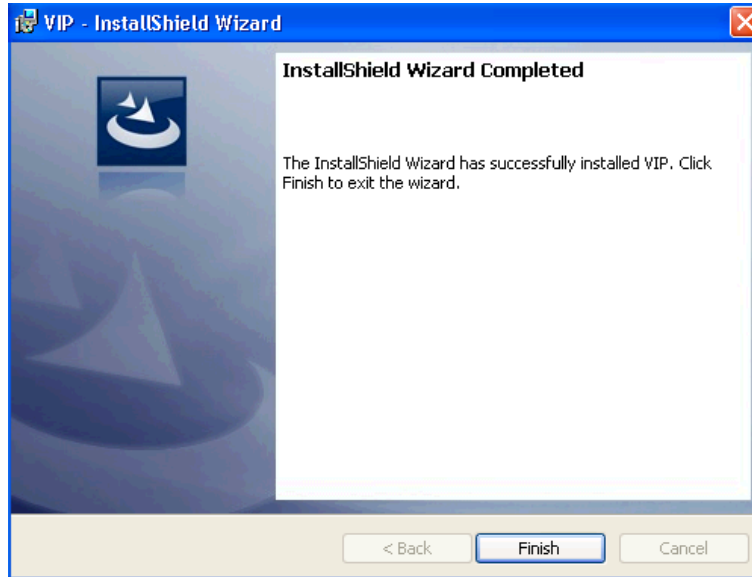
iv. Destination Folder, must be same directory as TbredComm, Click Next



v. Installation information review, Click Install



vi. Setup Complete, Click Finish



4. Fix TbredComm shortcut on desktop

